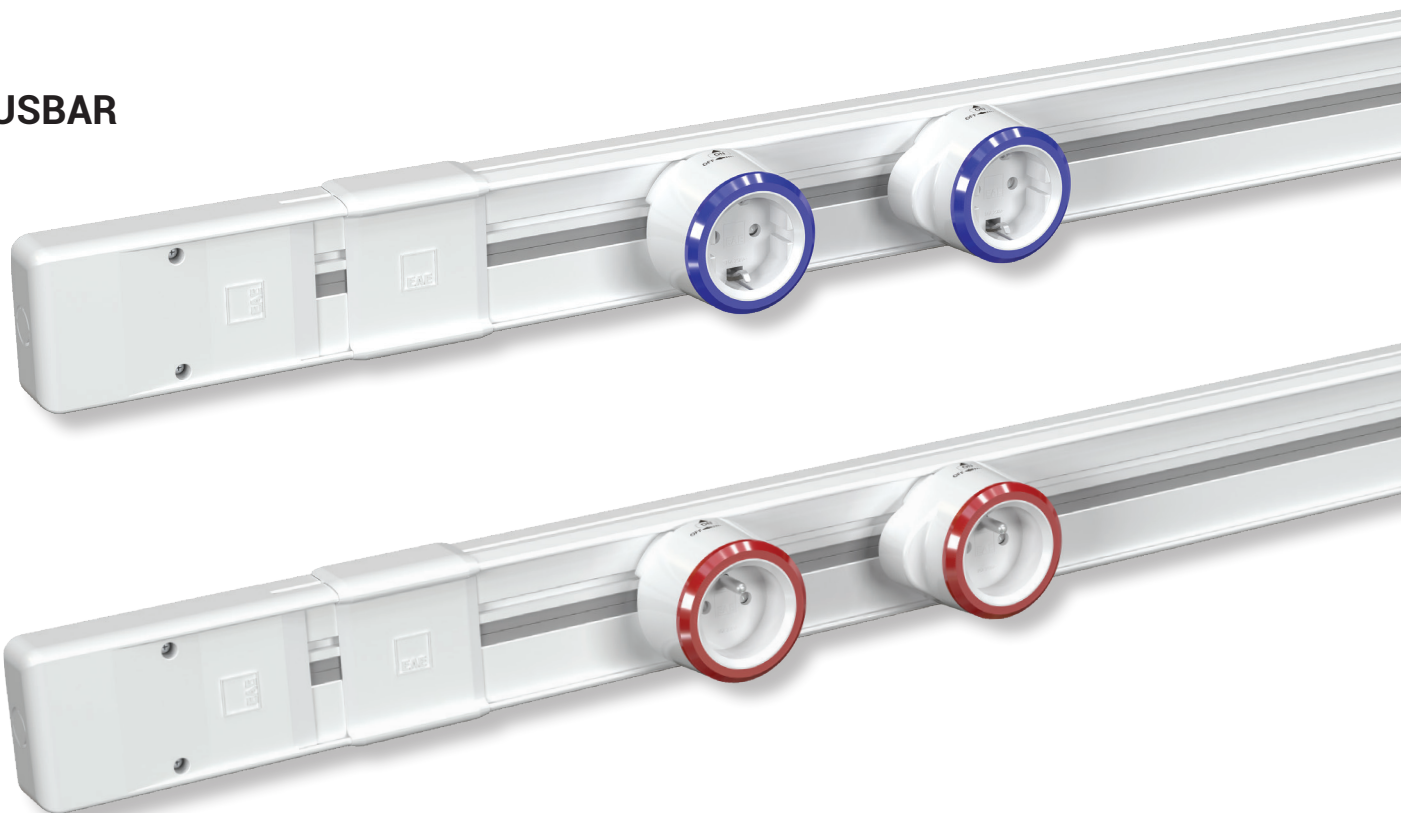


ELINE FL/FLD BUSBAR MOUNTING



FL BUSBAR



FLD BUSBAR

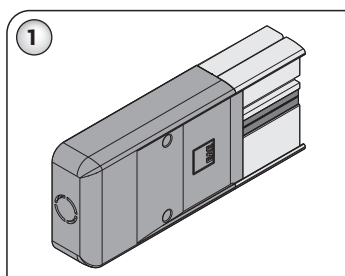


ELINE FL MOUNTING

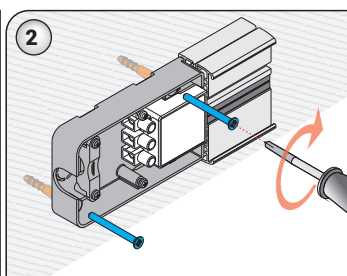


▶▶ FL BUSBAR MOUNTING

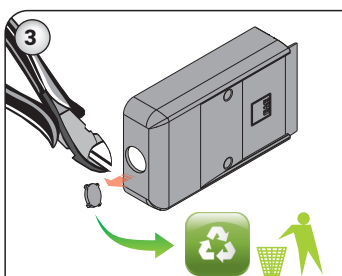
▶ FL-I Busbar Feeder Unit Mounting



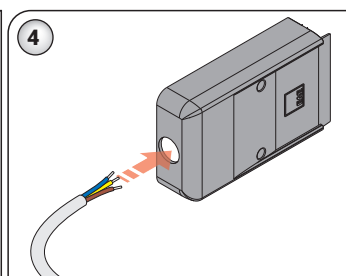
1-Supply a busbar feeder unit with cover.



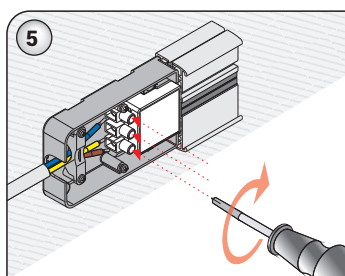
2-Remove the cover of the feeder unit and mount the unit on the wall with 2 M6 dowels and screws.



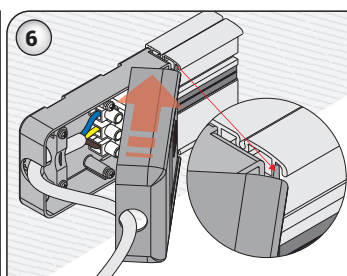
3-Cut the cable hole cover on the cover and remove.



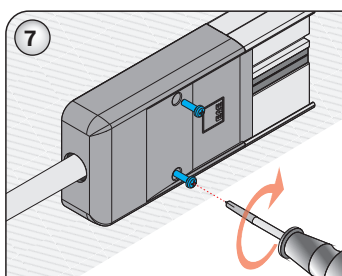
4- Strip the end of the cable and insert through the hole.



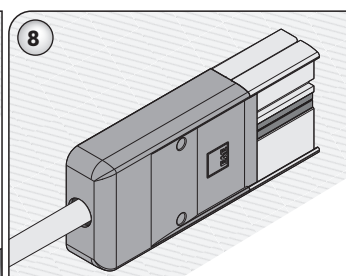
5- Fix the cable ends (L/N/PE) into the corresponding terminals and tighten the cable clamp.



6- Place the feeder unit cover ensuring that the cover is correctly aligned with the end of the busbar.

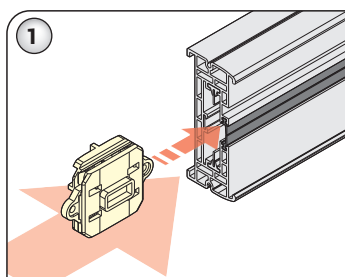


7- Secure the cover by tightening 2 screws on the cover.

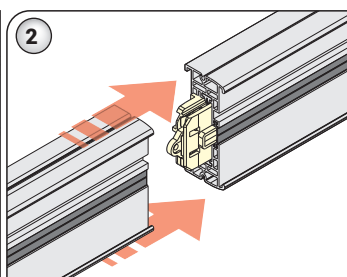


8- Finally check that the cable is not loose and that the cover is fully slotted.

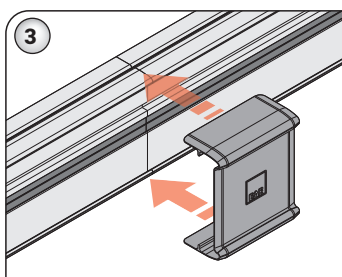
▶ FL-I Busbar Joint Set Mounting



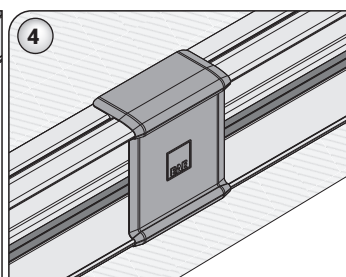
1-Place connector piece between FL busbar conductors and ensure a secure fit.



2- In the same way, place connector piece between other FL busbar conductors and ensure a secure fit.

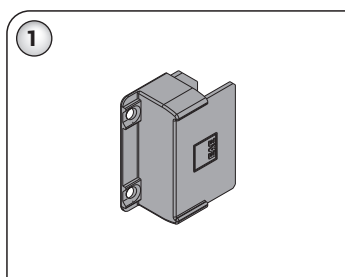


3- Place the joint cover centering the joint point.

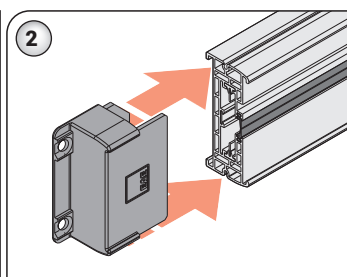


4- Check that the joint cover is secure and finish the mounting.

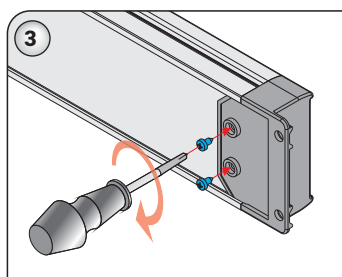
▶ FL-I Busbar End Cap Mounting



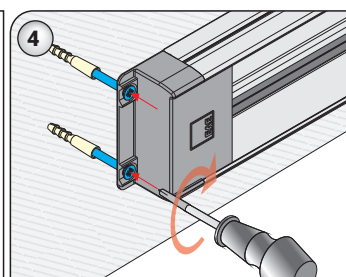
1- Supply a busbar end cap.



2- Place the end cap at the end of the busbar by pushing it into the busbar body.



3- Secure the end cap by tightening 2 screws as seen in figure.



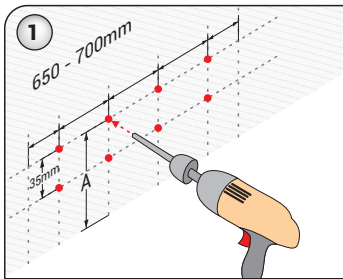
4- Complete the mounting of the end cap using screws as shown above.

ELINE FL BUSBAR MOUNTING

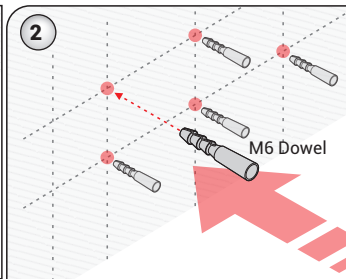


▶▶ FL BUSBAR MOUNTING

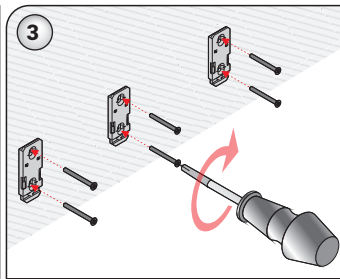
▶ Bracket Set and FL Busbar Mounting



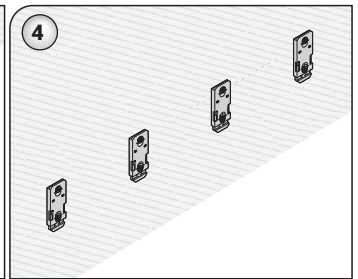
1- After determining the required installation height for the FL busbar drill two pairs of rawplug holes for each bracket at 35mm vertical centres and 650-700mm horizontally.



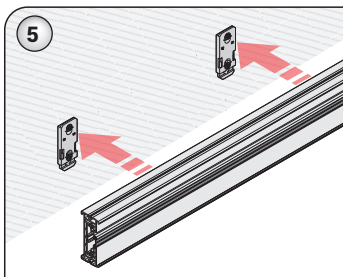
2- Insert the rawplugs into the holes.



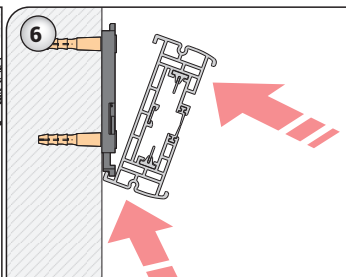
3- Fix the wall brackets with screws as shown above.



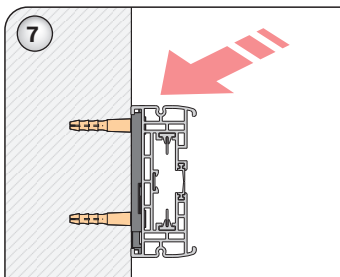
4- Ensure that all of the wall brackets are correctly aligned.



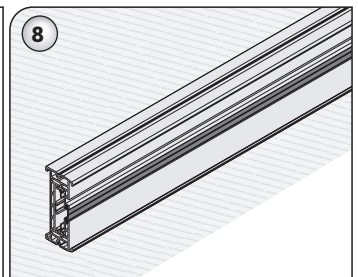
5- Place the FL Busbar close to the wall brackets.



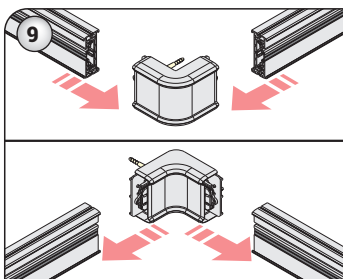
6- First hook the lower clamps at the back of the busbar body onto the bottom of wall bracket and push the busbar upwards.



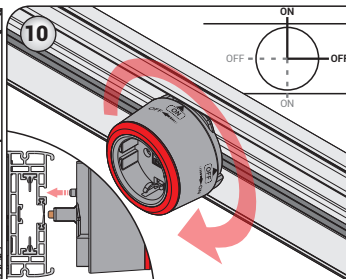
7- Then hook the upper clamps at the back of the busbar body onto the top of the wall bracket.



8- To complete the mounting of the FL Busbar check that the clamps are secure. And finish mounting.

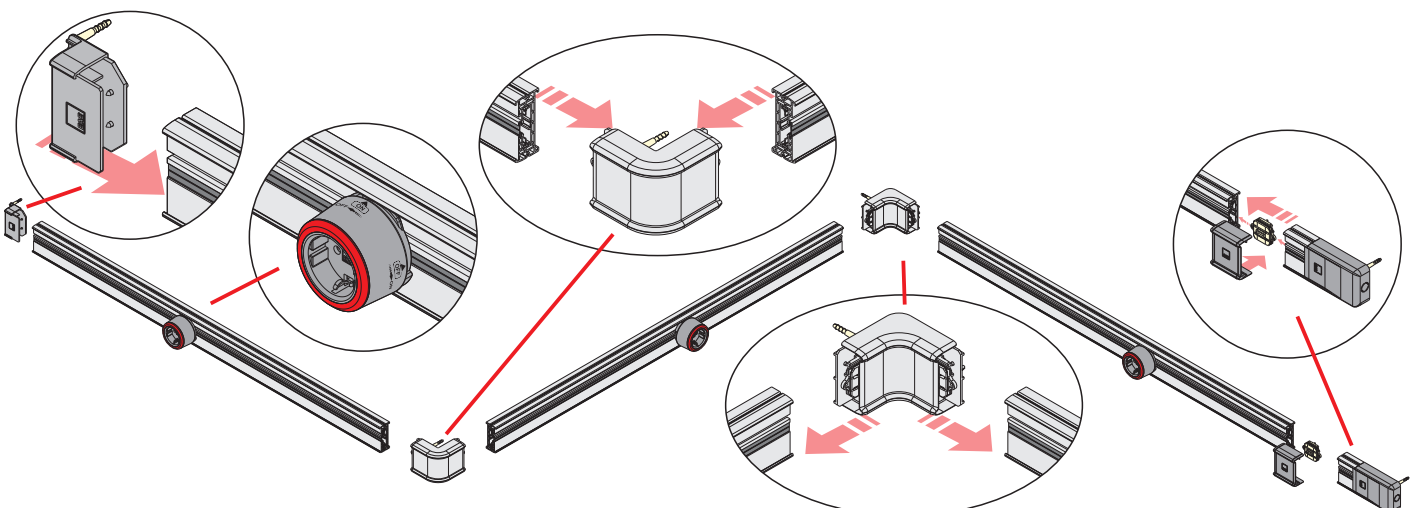


9- Connect the internal and external corners using the same method used in fitting the joint connector piece and fix to the wall using the rawplugs and screws.



10- Insert the FL socket into the trunking and secure it by turning in the specified direction.
Caution: The "ON" position must be aligned to the top edge of the FL Busbar.

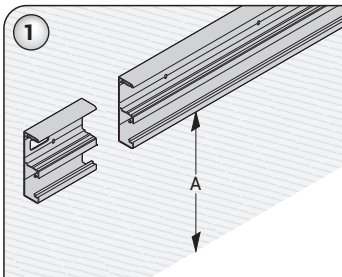
ATTENTION: FL Busbar can be cut to length during installation. A fixed saw is recommended for this.



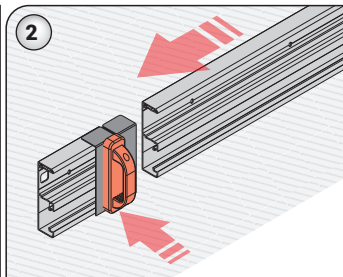
ELINE FLD BUSBAR MOUNTING



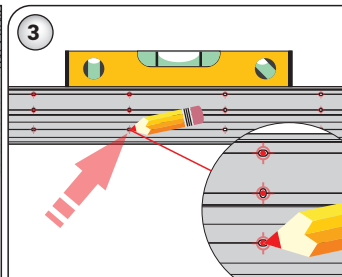
▶▶ FLD DATA BUSBAR MOUNTING



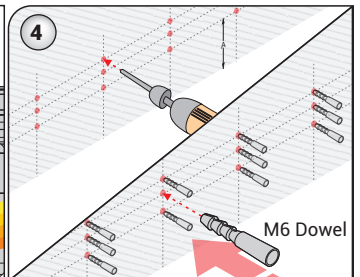
1- Determine the required mounting height of FLD Data Busbar and mark the position.



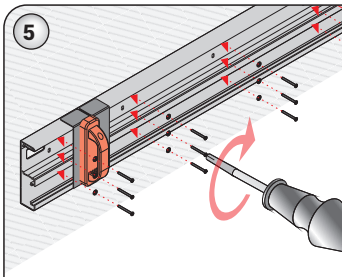
2- Leave 3mm distance between two busbars at joining points. To do this, please use hand gauge given with product.



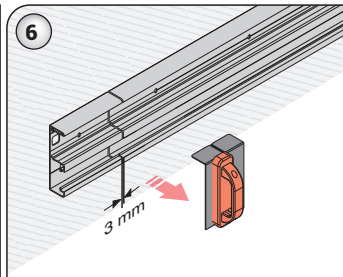
3- Check the horizontal level using a water gauge and mark the location of the rawplug holes using a length of FLD Data Busbar.



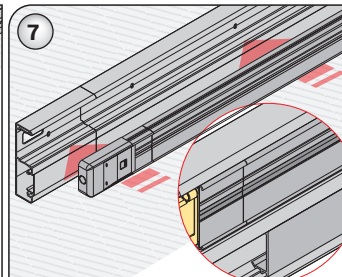
4- Drill the marked positions using a hand drill and M6 bit. Place M6 rawplugs in the holes that are drilled.



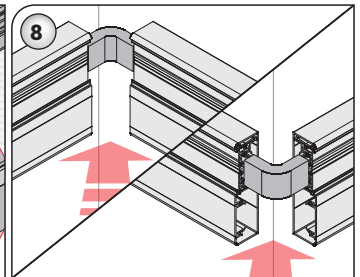
5- Secure FLD Data Busbar on the wall using appropriate washer and screw.



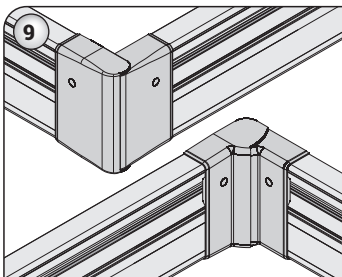
6- Be sure to leave 3mm distance between busbars by using hand gauge.



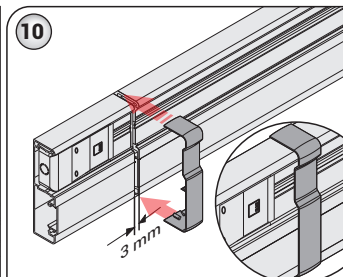
7- Place FL Busbar in the trunking securing the clamps in their places.



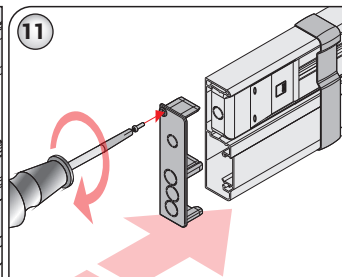
8- At corner locations, place the FLD Data Busbar internal and external corner units installation.



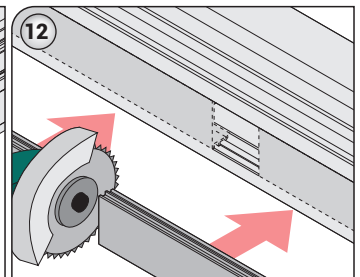
9- At corner locations, install the FLD Data Busbar internal and external corner unit covers securing the clamps in their places.



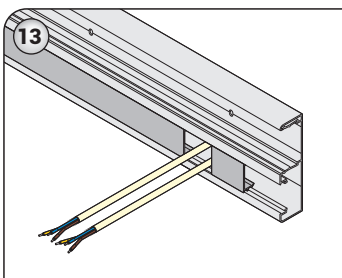
10- Clip on the joint cover piece central to the joint.



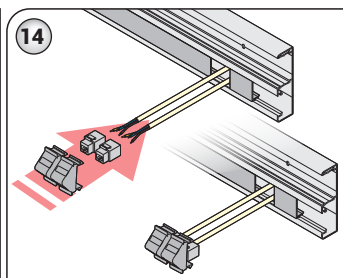
11- Install FLD Data Busbar end cap termination units securing them in the clamps.



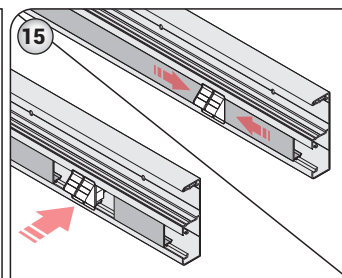
12- Mark areas on FLD Data Busbar where Data and Phone socket will be installed and neatly cut the cover.



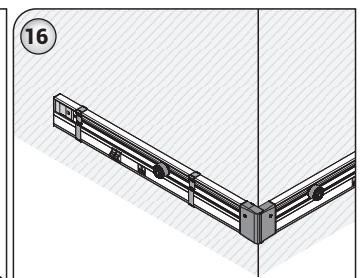
13- Extend Data and Phone cables through these cut sections approximately 50cm.



14- Have a qualified technician drive the cables to RJ45 data sockets and place the RJ45 data sockets with the cables driven on FLD Data Busbar Data & Phone socket base.



15- Place FLD Data Busbar Data&Phone Socket Base on the trunking. Push FLD Data Busbar cover and tighten socket base.



16- Make sure FLD Data Busbar and all its accessories are complete and finish mounting.

ATTENTION: FLD busbar and cover can be cut during installation. To do this, it is recommended to start from corner mounting points and use of motorized circular saw for less casualties and easy installation.